

OFFICE FOR LEASE

# Pacific Corporate Center

15350 SW Sequoia Pkwy, Suite 380, Portland, OR 97224  
Building 17



## Key Features



1,470 sq. ft. office

Building conference room

On-site showers

Attractive landscaping with walking paths

Immediate access to I-5

Walkable environment offering a variety of amenities including rotating food trucks, Starbucks and Gold's Gym

Lease Rate:

\$38.00/sq. ft./yr.  
full service

**Jake Bigby**

jakeb@pacitrust.com

**Caitlin Knecht**

caitlink@pacitrust.com

503.624.6300

Owned & Managed by

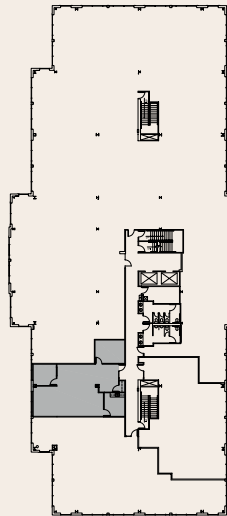
**PACITRUST**

© 2024 PacTrust. All information supplied herein, including but not limited to measurements, dimensions, and specifications, is deemed reliable but is not guaranteed and should be independently verified. Any reliance on the information contained herein is at the user's own risk.

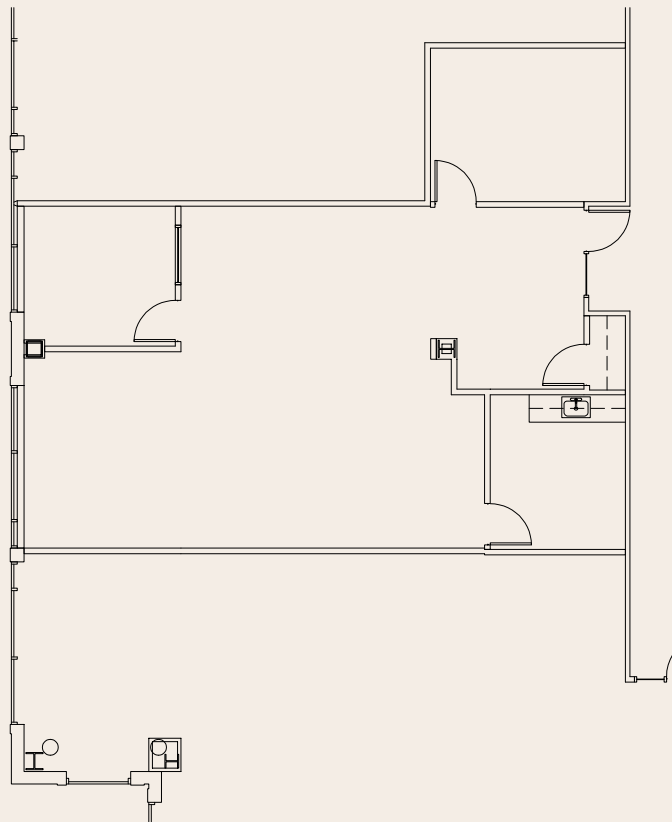
# Space Plan

15350 SW Sequoia Pkwy, Suite 380, Portland, OR 97224

1,470 Sq. Ft.



**BUILDING PLAN**



**Jake Bigby**  
jakeb@pactrust.com

**Caitlin Knecht**  
caitlink@pactrust.com

503.624.6300  
www.PacTrust.com